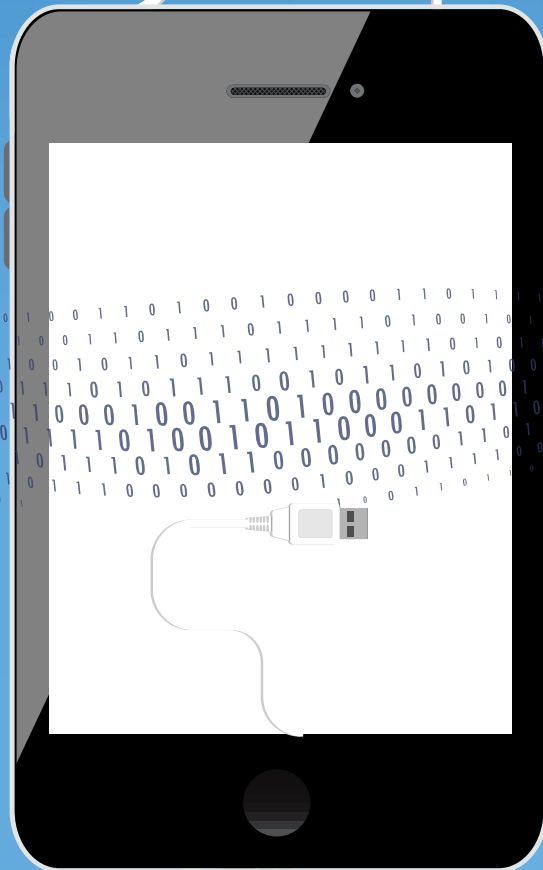




Accelerating Mobile App Transformation

MANUAL TESTING

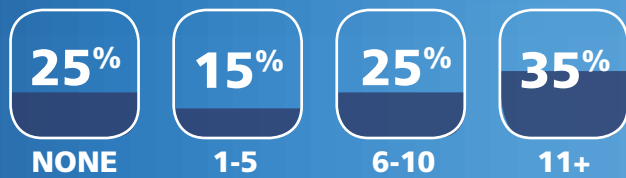
- Requires human interaction
- No single app function can be overlooked
- Different testing procedures needed for separate OSs
- Time to complete usually takes more than a month
- Testing errors must be reexamined by initial source
- More time involved leads to less return on investment



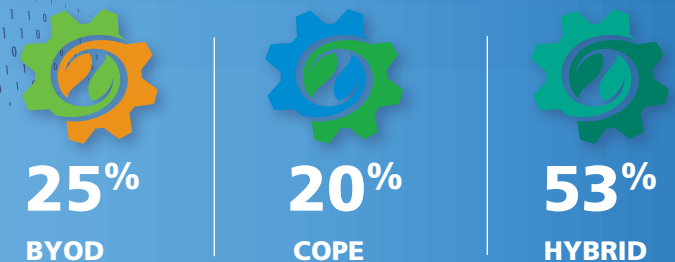
AUTOMATED TESTING

- Can be worked on around the clock
- Multiple scripts can be written for different operating systems
- Testing complete within one week
- Several mobile apps can be tested simultaneously
- Test scripts can run on new apps at a later date
- Less time equals quicker ROI

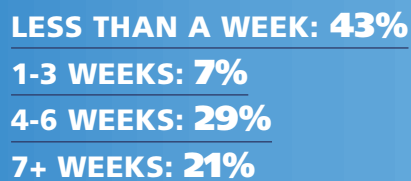
HOW MANY MOBILE APPS IN YOUR ENTERPRISE?



WHAT DOES YOUR MOBILE ECOSYSTEM LOOK LIKE?



HOW LONG DOES THE MOBILE APP TESTING PROCESS TAKE?



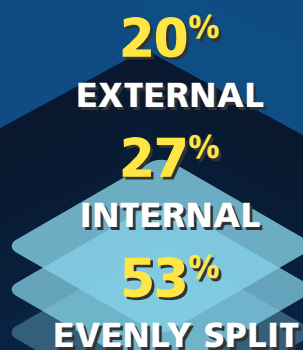
TOP TESTING CHALLENGE THAT NEEDS TO BE SOLVED:



ARE YOUR ENTERPRISE APPS INTERNAL OR EXTERNAL?

47%
of enterprises are building apps primarily for iOS

53%
of enterprises are building apps evenly split between iOS and Android



40%
of enterprises use manual mobile app testing

7%
of enterprises use automated mobile app testing

40%
of enterprises use automated and manual app testing

13%
have no mobile app testing strategy in place

